



Program of the Month: Interpretive Carvings

Park Ranger Nick Steuer

Meet Tim Torell

- Wildlife Photographer
- Carving Artist
- Benevolent
- Friend



Wildlife Photographer – Davis Creek



Lazuli Bunting (*Passerina amoena*)

ID: Small, finch-like, stocky songbird with a cone-shaped bill, gently sloping forehead and a notched tail. Males are brilliant blue above with a pumpkin-colored breast and a white belly. Females are warm grayish-brown above, with a blue tinge to the wings and tail, two buffy wingbars, and an unstreaked pale cinnamon or tan breast.

Size: Larger than a Lesser Goldfinch; smaller than a Western Bluebird.

Fun Fact: Each male sings a unique combination of notes. Shortly after arriving to the breeding grounds, yearling males create their own song by rearranging syllables and combining song fragments of several males. The song they put together is theirs for life. (allaboutbirds.org)



■ Breeding
■ Migration
■ Winter



Wildlife Photographer – Davis Creek



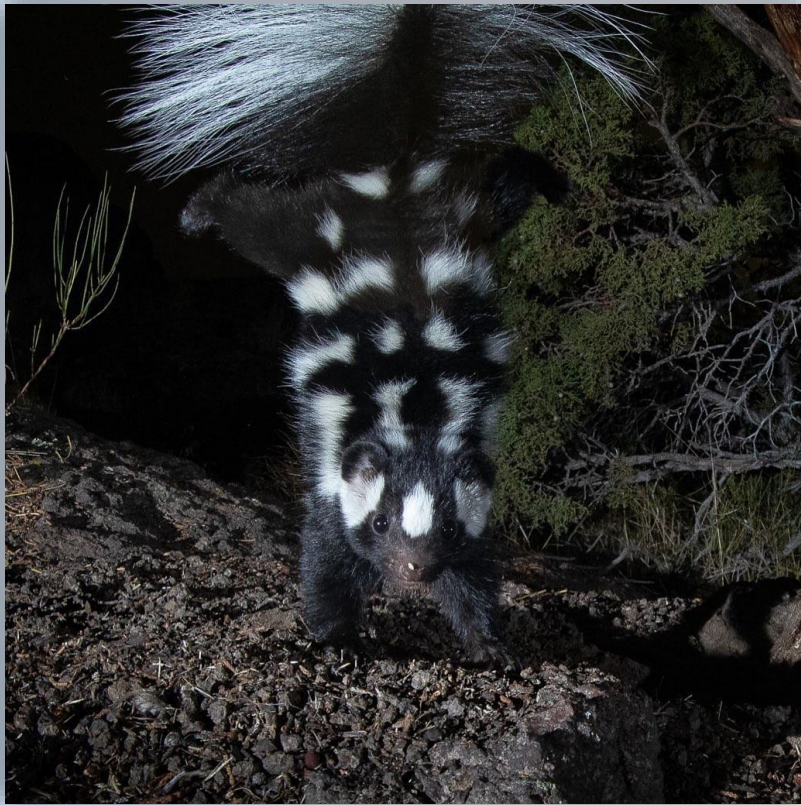
Wildlife Photographer – Bowers



Wildlife Photographer – Bowers



Wildlife Photographer – Bowers

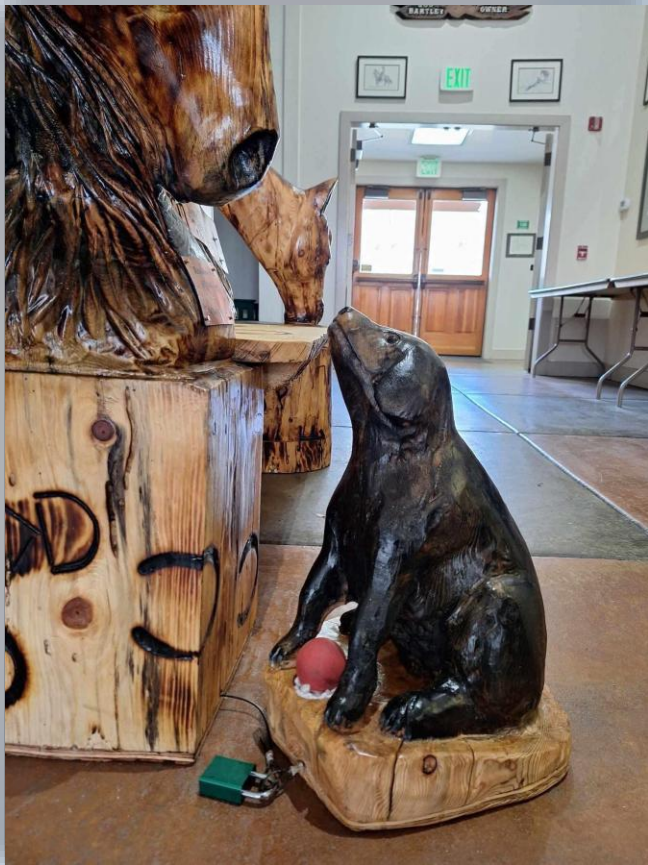


Carving Artist – Rancho San Rafael

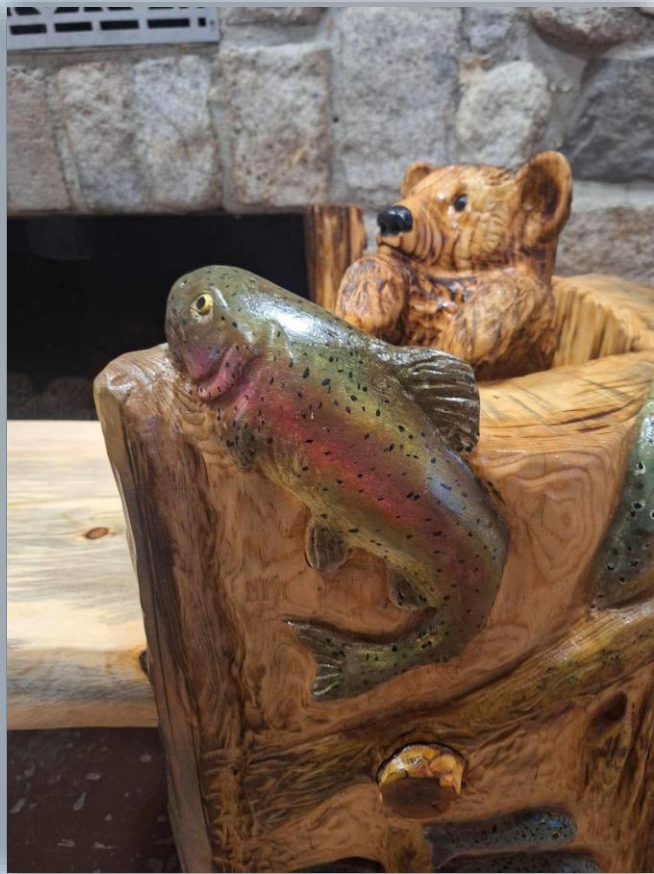




Carving Artist – Bartley Ranch



Carving Artist – Galena Creek



Carving Artist – Galena Creek





Carving Artist – Milling at Galena Creek



Carving Artist – Lazy 5





LAZY-5



Carving Artist – Davis Creek









Benevolent

- Over 1,000 hours spent on these projects!
- Not one dime charged to Washoe County.
- In gratitude, we did spend \$570.92 to provide Tim with some chainsaw fuel, bar oil, and some exterior sealer & water proofer supplies.
- WE THANK TIM for his generous benevolence!

**Thank You
Tim!**

